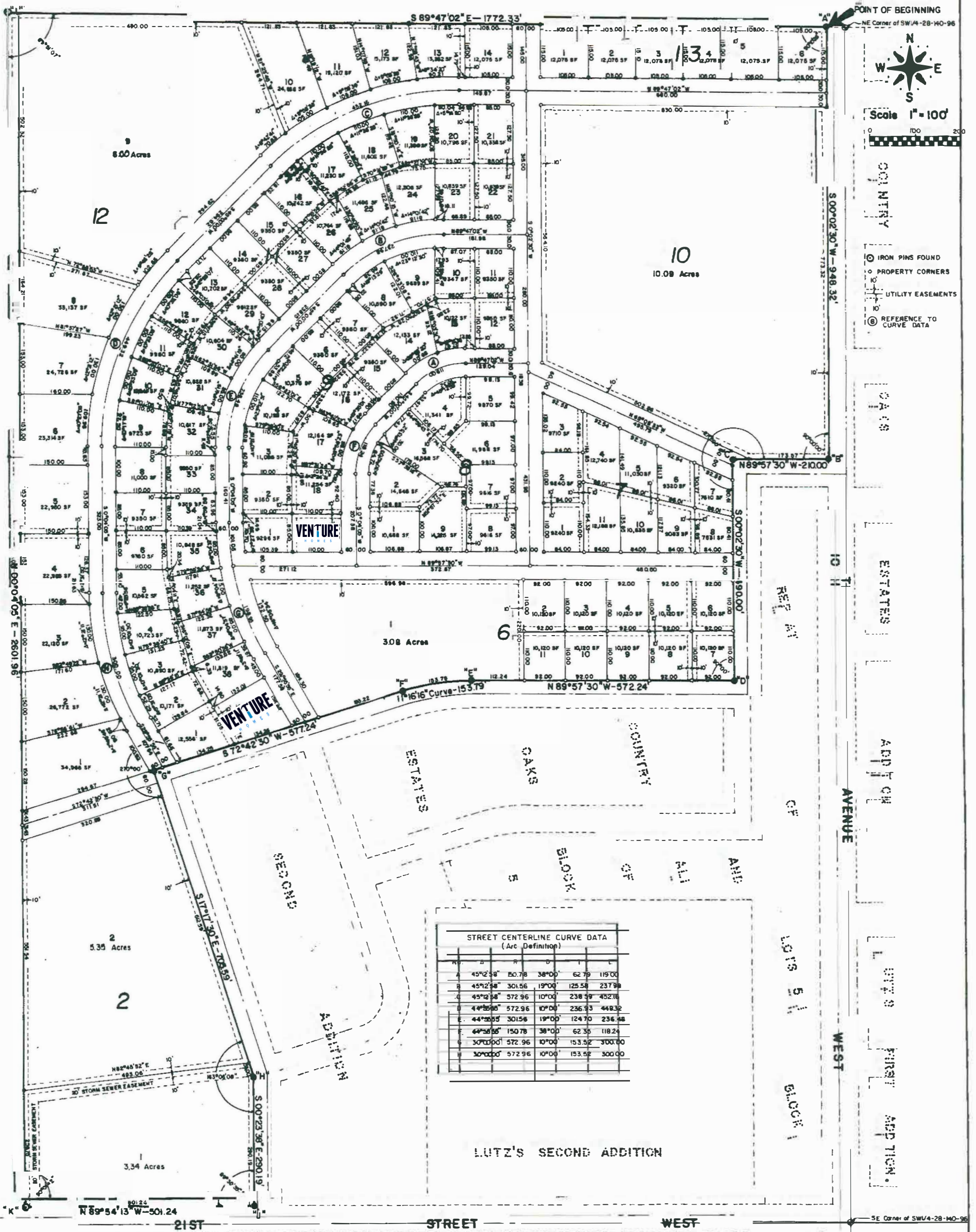


REPLAT OF  
*BLOCKS 2, 6, 7, 8, 9, 10, 11 and 12*  
 OF COUNTRY OAKS ESTATES SECOND ADDITION TO THE  
 CITY OF DICKINSON, STARK COUNTY, NORTH DAKOTA

Prepared by  
 WESTERN SURVEYING SERVICES, INC.  
 DICKINSON, NORTH DAKOTA

SHEET 1 OF 2



STREET CENTERLINE CURVE DATA (Arc Definition)					
N	D	R	Δ	T	P
45°25'48"	50.78	38°00'	62.79	119.00	
45°25'48"	301.56	19°00'	125.58	237.98	
45°25'48"	572.96	10°00'	238.59	452.18	
44°38'55"	572.96	10°00'	236.53	448.32	
44°38'55"	301.56	19°00'	124.70	236.88	
44°38'55"	150.78	38°00'	62.35	118.24	
30°00'00"	572.96	10°00'	153.52	300.00	
30°00'00"	572.96	10°00'	153.52	300.00	