

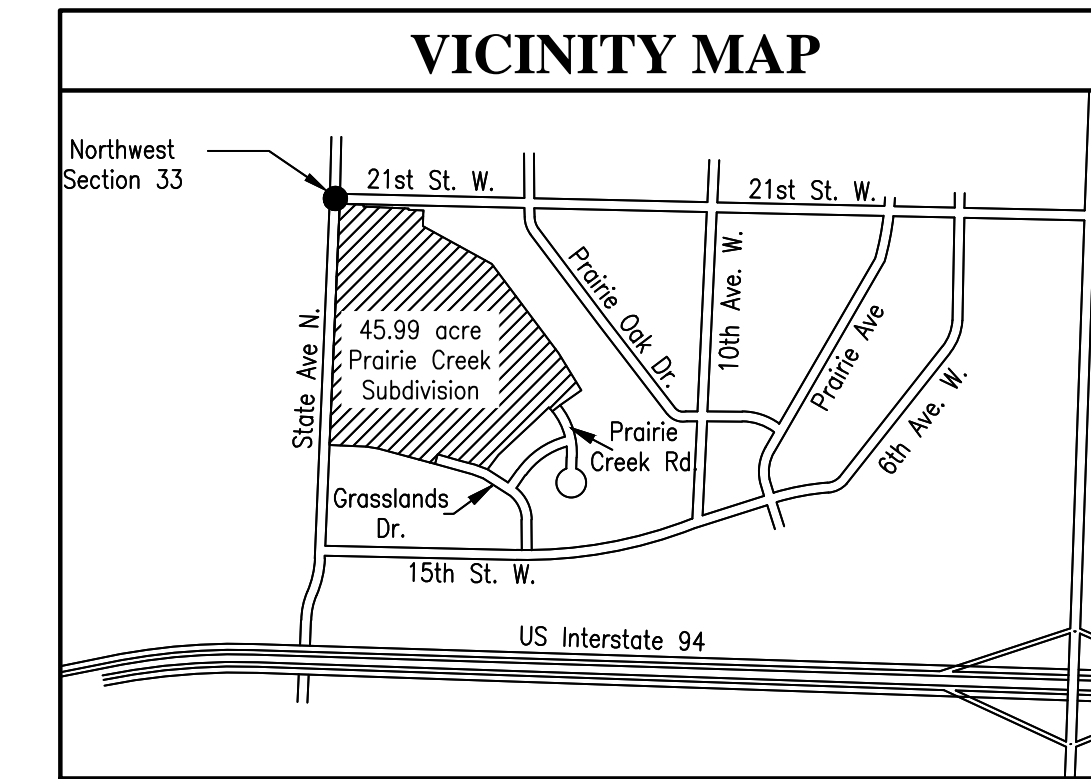
PRAIRIE CREEK SUBDIVISION

DICKINSON, NORTH DAKOTA

OWNER:
 KARL BEST
 BFKB DEVELOPMENT
 11934 NE PLACE
 BOTHELL, WA 98011
 phone: 425-238-9831

SITE ADDRESS:
 STATES AVE & 21ST ST W
 DICKINSON, NORTH DAKOTA

ENGINEER:
 TROY TOOZ
 LIGHTOWLER JOHNSON ASSOC
 700 MAIN AVE
 FARGO, ND 58103
 phone: 701-293-1350



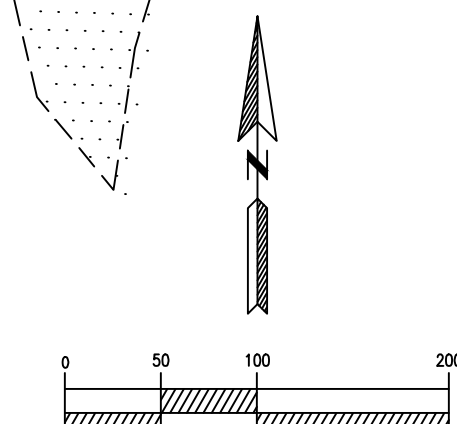
SHEET INDEX	
C-1	COVER SHEET
C-2	GENERAL NOTES
C-3 & C-4	GENERAL DETAILS
C-4A	GENERAL DETAILS
C-5	GENERAL DETAILS
C-6 to C-8	OVERALL UTILITY LAYOUTS
C-9 to C-11	PRAIRIE CREEK UTILITY PLAN & PROFILE
C-12 to C-14	SUNRISE DRIVE UTILITY PLAN & PROFILE
C-15 to C-17	17TH AVENUE UTILITY PLAN & PROFILE
C-18	21ST STREET UTILITY PLAN & PROFILE
C-19	BLOCK 8 STORM PLAN & PROFILE
C-20 & C-21	19TH STREET UTILITY PLAN & PROFILE
C-22 & C-23	GRASSLANDS DRIVE UTILITY PLAN & PROFILE
C-24 to C-27	OVERALL GRADING PLAN
C-28	TRAFFIC CONTROL & SIGNING PLAN
C-29	STOMWATER POLLUTION PREVENTION PLAN
C-30	STOMWATER POLLUTION PREVENTION NOTES

GENERAL NOTES:

- ALL CONSTRUCTION MUST CONFORM TO CITY OF DICKINSON STANDARDS.
- CONTRACTOR TO VERIFY ALL UTILITY LOCATIONS PRIOR TO CONSTRUCTION.
- CONTRACTOR TO VERIFY ALL DIMENSIONS & ELEVATIONS PRIOR TO CONSTRUCTION.
- CHANGES TO APPROVED PLANS SHALL NOT BE MADE WITHOUT WRITTEN APPROVAL OF OWNER.
- CHANGES TO APPROVED PLANS ON PUBLIC PROPERTY SHALL NOT BE MADE WITHOUT APPROVAL FROM THE CITY OF DICKINSON, NORTH DAKOTA.
- ALL DIMENSIONS ARE MEASURED FROM FACE OF CURB TO FACE OF CURB UNLESS OTHERWISE NOTED.
- ACCESSIBLE RAMPS & DRIVEWAYS SHALL BE INSTALLED PER ADA REGULATIONS.
- CONCRETE SIDEWALK & CONCRETE PAVEMENT SHALL BE SAW CUT AT APPROXIMATE SQUARES.
- CONTRACTOR SHALL BE RESPONSIBLE FOR HIS/HER OWN TAKEOFF QUANTITIES.
- CONTRACTOR SHALL PROVIDE A 2' (TWO FOOT) TAPER IN CURB WHERE CURBING TERMINATES.
- CONTRACTOR SHALL PROVIDE BOND BREAKER BETWEEN SIDEWALK AND CURB & GUTTER.
- ALL ANGLES ARE 90° UNLESS OTHERWISE NOTED.
- ALL DIMENSIONS ARE HORIZONTAL DIMENSIONS.
- A TWO DAY WORKING DAY NOTICE IS REQUIRED FOR ANY INSPECTION BY THE ENGINEERING DEPARTMENT.

BENCHMARK: AN IRON PIN SET IN CONCRETE IN THE SOUTHWEST CORNER OF STATES AVENUE AND 21ST STREET W. 13.27' NORTH OF AN EX. HYDRANT AND 5.9' SOUTHEAST OF AN EXISTING LIGHT POLE. ELEVATION=2469.52' (NAVD 88)

BASIS OF BEARING: SURVEY IS BASED ON NORTH DAKOTA STATE PLANE SYSTEM, NAD83 (86), SOUTH ZONE, U.S. FOOT. DISTANCES SHOWN ARE GROUND DISTANCE. BASIS OF BEARING IS GRID. COMBINED SCALE FACTOR = 1.0018063262 TO GO FROM GRID DISTANCE TO GROUND DISTANCE.



CALL BEFORE YOU DIG
 NORTH DAKOTA
 UTILITIES UNDERGROUND LOCATION SERVICE
 1-800-795-0555

Lightowler Johnson Associates
 ARCHITECTS & ENGINEERS
 FARGO, ND
 BISMARCK, ND
 PHONE: 701-293-1350
 FAX: 701-293-1353
 PHONE: 701-224-5006
 WEBSITE: WWW.LJWA.COM

REVISIONS
10-14-13 REVISED PER CITY COMMENTS
02-14-14 REVISED PER CITY COMMENTS

PRAIRIE CREEK SUBDIVISION
 8 Blocks, 55 Lots
 States Avenue & 21st Street W.
 Dickinson, North Dakota

This document was originally issued and sealed by **Steven C. Dewald**, Registration No. PE-4800 on 04/01/2014 and the original document is stored at Lightowler Johnson Associates, Fargo, N.D.

LJA JOB #	12034
PROJ. DATE:	08-13-12
FILE NAME:	12034-C1_2-25-14
DWG. SCALE:	100 printed @ 22x34
CHECKED BY:	TMT
DRAWN BY:	RJW & TWK

SHEET DESCRIPTION
COVER SHEET

Apr. 30, 2014 © **C-1**

C:\Users\lizeren\AppData\Local\Temp\AcPublish_4488\12034-C1_2-25-14.dwg